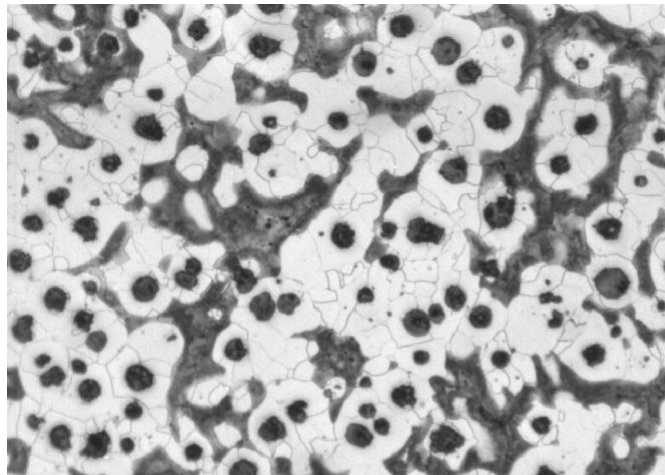


Microscopic Structure of Ductile Iron



Typical Cast Iron



In ductile, graphite is spread in spherical shape instead of flakes thus giving it the superior strength and elongation properties.

The advantages of ductile iron which have led to its success are numerous, but they can be summarized easily - versatility, and higher performance at lower cost. This versatility is especially evident in the area of mechanical properties where ductile iron offers more than 5% elongation, or high strength, with tensile strengths exceeding 420 kN. Due to the superior properties of the ductile iron over cast iron, ductile iron has been used widely in water pipeline fittings nowadays.

OMEGAS

DUCTILE IRON FITTINGS EN545

for Water Pipeline Application



Double Flange Bend - 11¹/₄ to 90 degrees

Double Flange Long Bend

Duckfoot Bend

Double Flange Taper

All Flange Radial Tee

All Flange Tee

80 to 300mm

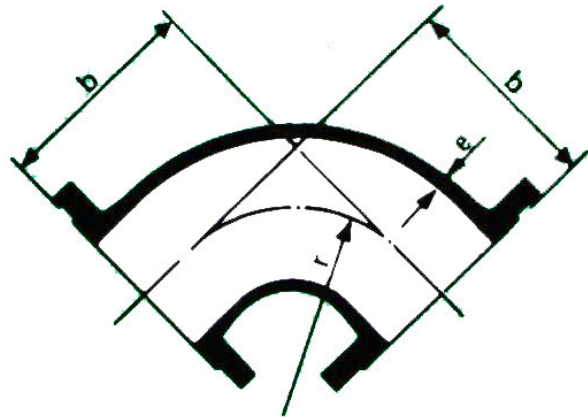


Maccanvas Hardware Trading & Engineering Pte Ltd

No.17 Defu Lane 7
Singapore 539340

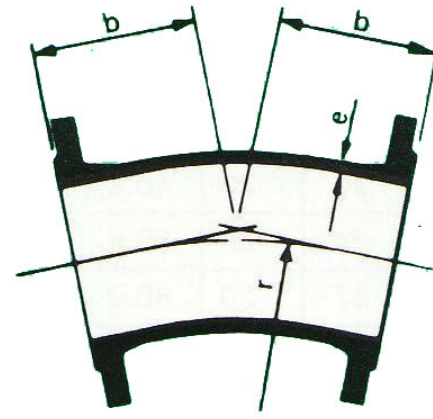
Phone: +65 6281 2011
Fax : +65 6280 9349
E-mail: sales@maccanvas.com

Double Flange Bend - 90 degrees



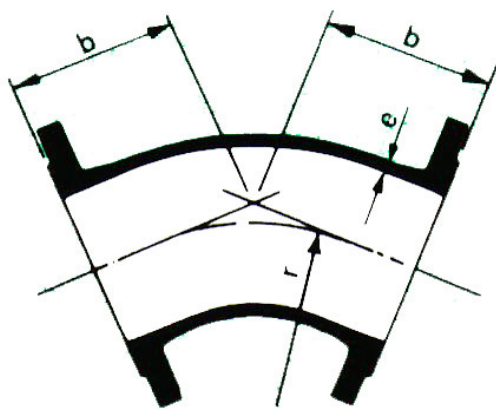
Nominal size DN	e	b	r approx	Mass PN 16 flanges	Extra mass for cement mortar lining
mm	mm	mm	mm	kg	kg
80	7.0	165	115	9.7	0.5
100	7.2	180	120	11.9	0.7
150	7.8	220	155	20.0	1.2
200	8.4	260	190	30.5	2.0
250	9.0	350	275	49.0	3.3
300	9.6	400	315	69.0	4.4

Double Flange Bend - 22 1/2 degrees



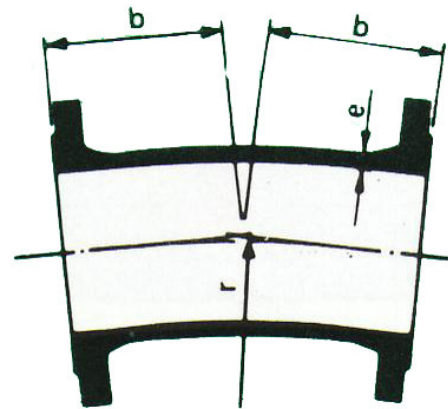
Nominal size DN	e	b	r approx	Mass PN 16 flanges	Extra mass for cement mortar lining
mm	mm	mm	mm	kg	kg
80	7.0	130	395	9.2	0.4
100	7.2	140	410	11.5	0.6
150	7.8	160	480	18.6	1.0
200	8.4	180	555	27.0	1.6
250	9.0	350	1370	54.5	3.8
300	9.6	400	1595	77.5	5.0

Double Flange Bend - 45 degrees



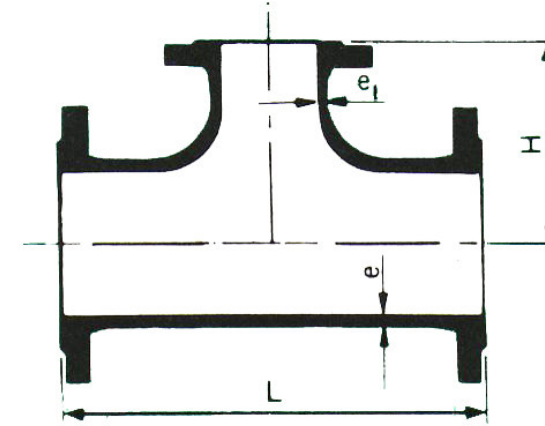
Nominal size DN	e	b	r approx	Mass PN 16 flanges	Extra mass for cement mortar lining
mm	mm	mm	mm	kg	kg
80	7.0	130	190	9.3	0.4
100	7.2	140	200	11.3	0.6
150	7.8	160	230	18.5	1.0
200	8.4	180	265	27.0	1.6
250	9.0	350	660	54.0	3.8
300	9.6	400	765	76.0	5.0

Double Flange Bend - 11 1/4 degrees



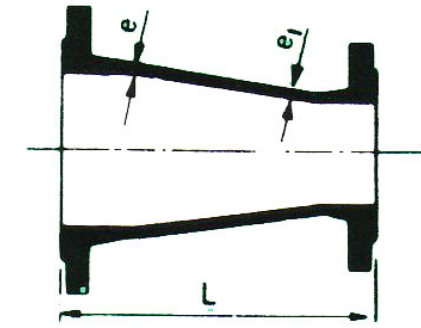
Nominal size DN	e	b	r approx	Mass PN 16 flanges	Extra mass for cement mortar lining
mm	mm	mm	mm	kg	kg
80	7.0	130	800	9.2	0.4
100	7.2	140	830	11.5	0.6
150	7.8	160	975	18.6	1.1
200	8.4	180	1115	27.0	1.6
250	9.0	350	2770	55.0	3.9
300	9.6	400	3220	78.0	5.0

All Flange Tee



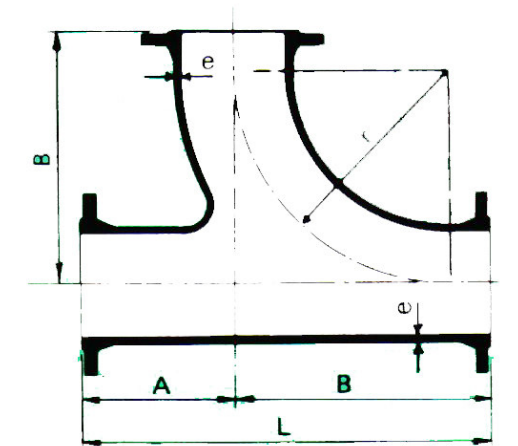
Normal size	e	e ₁	L	H	Mass PN 16 flanges	Extra mass for cement lining
Body Branch DN	mm	mm	mm	mm	kg	kg
80 80	8.1	8.1	330	165	15.6	0.8
100 80	8.4	8.1	360	175	18.4	1.0
100 100	8.4	8.4	360	180	19.3	1.0
150 80	9.1	8.1	440	205	28.5	1.6
150 100	9.1	8.4	440	210	29.5	1.7
150 150	9.1	9.1	440	220	32.5	1.8
200 80	9.8	8.1	520	235	41.5	2.5
200 100	9.8	8.4	520	240	42.5	2.6
200 150	9.8	9.1	520	250	45.5	2.7
200 200	9.8	9.8	520	260	49.0	2.9
250 80	10.5	8.1	700	265	65.0	4.1
250 100	10.5	8.4	700	275	67.0	4.2
250 150	10.5	9.1	700	300	70.0	4.4
250 200	10.5	9.8	700	325	75.0	4.7
250 250	10.5	10.5	700	350	81.0	5.0
300 80	11.2	8.1	800	290	91.0	6.0
300 100	11.2	8.4	800	300	93.0	6.0
300 150	11.2	9.1	800	325	95.5	6.0
300 200	11.2	9.8	800	350	101.0	6.0
300 250	11.2	10.5	800	375	108.0	6.0
300 300	11.2	11.2	800	400	117.0	7.0

Double Flange Taper



Normal size	e	e ₁	L	Mass PN 16 flanges	Extra mass for cement mortar lining
Body Branch DN	mm	mm	mm	kg	kg
80 50	7.0	7.0	200	7.3	0.3
100 50	7.2	7.0	300	9.4	0.5
100 80	7.2	7.0	200	9.3	0.4
150 80	7.8	7.0	400	16.1	1.0
150 100	7.8	7.2	300	15.0	0.8
200 100	8.4	7.2	600	27.0	2.0
200 150	8.4	7.8	300	21.5	1.2
250 150	9.0	7.8	600	38.0	2.7
250 200	9.0	8.4	300	29.5	1.5
300 150	9.6	7.8	600	46.0	3.0
300 200	9.6	8.4	600	51.0	3.4
300 250	10.2	9.0	300	39.5	1.9

Radial Tee



Normal size	e	L	A	B	r approx	Mass PN 16 flanges	Extra mass for cement lining
Body Branch DN	mm	mm	mm	mm	mm	kg	kg
80 80	8.1	545	165	380	330	23.0	1.7